

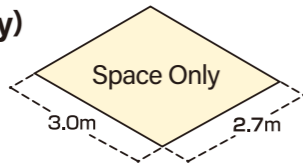
Special Discount Offer! Apply by July 31 (Fri), 2026 and get JPY 165,000 off per booth!

Standard Booth (Space Only)

[Booth Specifications]

● 1 Booth: W3.0m × D2.7m = 8.1 sqm

[Space Fee]



Corner Booth Option JPY 44,000 / Corner

- * Corner booth locations are limited and subject to availability.
- * If a corner location cannot be assigned, the fee will be refunded.
- * If your booth qualifies as a corner, the fee will be charged additionally.

Space Fee / 1 Booth		
Regular Price	Special Discount Price Until July 31 (Fri), 2026	* For Exhibitors in 2026 Consecutive Exhibitor Discount Price Until July 31 (Fri), 2026
JPY 495,000	JPY 330,000	JPY 308,000

- * Price is for Space Only. Shell Scheme Package is not included.
- * Please be sure to prepare basic panels between adjacent booths or use a Shell Scheme Package (paid) provided by the Show Management Office.

Shell Scheme Package Plan

Space Only plan is not included basic panels. Please apply for Shell Scheme Package Plan or decorate your booth with your own booth constructor / designer. Shell Scheme Package Plan is available if you do not have own decorator. Please contact to Show Management Office if you would like to receive more information.

- * All prices are tax-inclusive amounts in Japanese yen.
- * Please refer to the back of the application form for exhibition regulations.



Exhibitor Support Services

Take full advantage of our support services to grow your sales and expand your network.

1 VISA Support Program Free

VISA application documents can be provided to exhibitors who complete payment at least two months before the show. Approval is not guaranteed.

*A mailing fee applies for VISA documents.



2 Promotional Tools Free

Make the most of free promotional items like invitation tickets and web banners to inform prospects and customers through handouts, email, or social media.



3 Online Exhibitor Listing & Brochure Requests Free

Your product and booth info will be listed on the official website, allowing visitors to request materials and learn about your company in advance.



4 Preparation Support Partners Free

We can connect you with reliable companies to support your booth decoration, staffing, shipping, and other needs to ensure a smooth setup and exhibition.



5 Exclusive Promotion Services Paid

Promote your booth with banner ads and promotional emails to stand out and attract significantly more visitors than other exhibitors.



6 Visitor Badge QR Code Scanning Service Paid

Scan visitor badges in your booth to instantly collect contact info. A paid service that streamlines follow-up and lead management post-show.



End of December 2027 Promotion Launch

We provide various exhibition promotion tools, such as invitation tickets and web banners, free of charge. Please feel free to use them for your clients and prospective customers.

Mid January 2027 Submission of Required Applications

Booth locations will be assigned by the organizer based on the taste and concept of the exhibited products. Please submit the required applications for your booth preparation through the Exhibitor's Page (online).

Feb. 22 (Mon) - Feb. 23 (Tue), 2027 Move-in & Booth Setup

Feb. 24 (Wed) - Feb. 26 (Fri), 2027 Exhibition Days

Feb. 26 (Fri), 2027 Exhibition Ends & Move-out

Contact & Application

AGRI EXPO NIIGATA Show Management Office (TSO International Inc.)
 TEL: +81-3-5363-1701 Email: overseas@tso-int.co.jp



The Exhibition of Future Agricultural Technologies Featuring Automation, 6th Industry, and Efficiency Improvement



AGRI EXPO NIIGATA 2027

Exhibitor Recruitment

*A Business Exhibition Focused on Solving Agricultural Challenges
 Driving Productivity and Innovation in Japan's Agricultural Hub, Niigata 2027*

2027. 2.24 Wed - 26 Fri

Venue Toki Messe Niigata Convention Center
Organizer TSO International Inc.

<https://agriexpo.jp/en/>



A Comprehensive Agriculture Exhibition featuring Products and Services for the Future of Agriculture, including Automation and Productivity Improvement

AGRI EXPO NIIGATA 2027 is an exhibition that attracts highly motivated buyers focused on solving industry challenges. Held in Niigata, one of Japan's leading agricultural regions!



3 Features

01 A business-focused exhibition bringing together **240* companies and organizations** offering agricultural machinery and technologies related to planting, cultivation, harvesting, and processing



02 A platform for face-to-face communication with **12,000 visitors***, including farmers, agricultural corporations, retailers, wholesalers, and distributors mainly from the Niigata, Tohoku, and Hokuriku regions



03 An information-sharing and networking hub hosting **over 20* seminars**, where industry leaders address solutions to key challenges facing Japanese agriculture

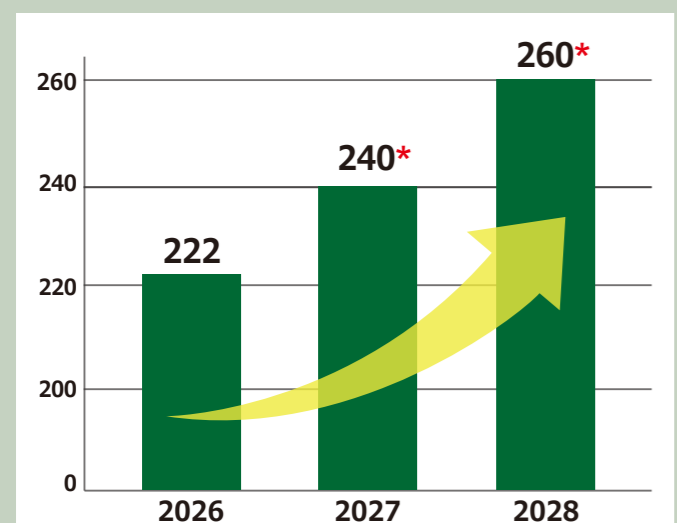


*Expected

Contributing to the Growth of Agriculture in Niigata

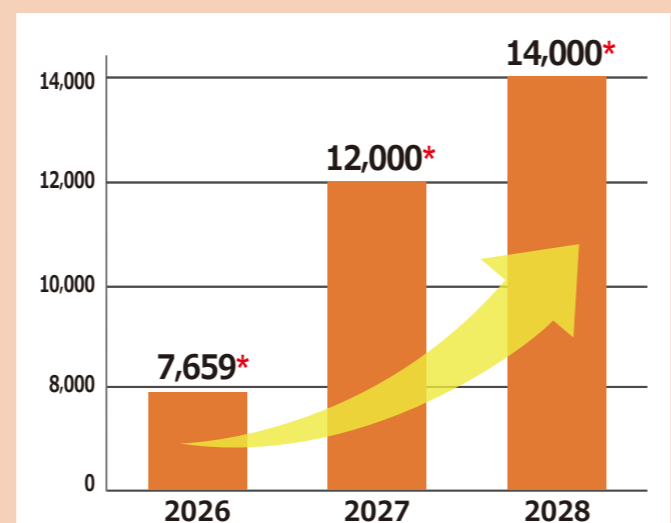
We aim to steadily expand the scale of the exhibition in Niigata!

Trend in the Number of Exhibitors



*Expected

Trend in the Number of visitors



*Expected

The Exhibition of Future Agricultural Technologies Featuring Automation, 6th Industry, and Efficiency Improvement



AGRI EXPO NIIGATA 2027

Exhibited Products and Services

A comprehensive showcase of agricultural machinery, smart agriculture, farming support, sixth-sector industrialization, and logistics solutions, from productivity improvement to workforce support

Smart Agriculture, Labor-Saving & Data Utilization Zone

- Automatic Steering Systems
- Drones
- Farming, Harvesting, Spraying, and Mowing Robots
- Agricultural IT and Management Systems
- Water Management Systems, Heat Pumps, Sensors
- Greenhouse and Plant Equipment, Conveyors, etc.



Agricultural Machinery & Materials Zone

- Tractors, Combines, Attachments
- Harvesting, Drying, Threshing, and Rice Milling Machines
- Fertilizers, Soil Conditioners, Pest Control Products
- Greenhouses, Hoses, Wires, Pumps
- Dairy and Livestock Equipment
- Horticultural Products and Materials, etc.



Wildlife Control & Work Environment Support Zone

- Animal-Proof Nets and Fences
- Repellent Devices and Sensor Lights
- Heat, Cold, and Disaster Countermeasure Products
- Assist Suits
- CO₂ Reduction Products and Services
- Recruitment and Staffing Services, etc.



Logistics Promotion & Freshness Preservation Zone

- Packaging and Logistics Materials
- Storage Equipment and Racks
- Pallets and Containers
- Transport Robots
- Handling Systems
- Shipping and Storage Management Systems, etc.

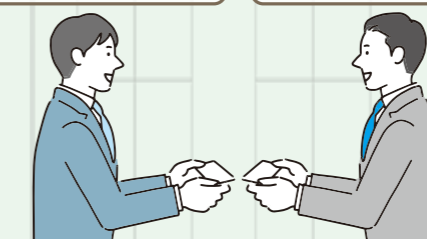


Sixth-Sector Industrialization, Processing & Sales Expansion Zone

- Food Processing and Kitchen Equipment
- Freezing and Processing Facilities
- Packaging and Labels
- Brewing, Sterilizing, and Filling Equipment
- HACCP and Sanitation Equipment
- E-Commerce and Sales Support Services, etc.



Business Negotiations



Business Negotiations

Target Visitors **12,000* professionals**, from farmers and agricultural corporations to new entrants, research institutes, and agri-food processors are expected to visit

*Expected

- Agricultural Corporations and Farmers
- Companies Considering Entry into Agriculture
- JA (Japan Agricultural Cooperatives)
- Retailers and Mass Merchandisers
- Agricultural and Livestock Processing Companies, Food Manufacturers
- Wholesalers and Distributors
- Plant Factory Operators
- Breweries and Beverage Manufacturers
- Research Institutes and Universities
- Local Governments and Associations, etc.

